

Planning

Installation

Maintenance

Tools

Resources

Advanced

Options

**Hardware and Software Requirements**

View the hardware and software requirements.

**Security Documentation**

View the security documentation.

**Online Release Notes**

View the latest information about the release.

**System Configuration Checker**

Launch a tool to check for conditions that prevent a successful SQL Server installation.

**Install Upgrade Advisor**

Upgrade Advisor analyzes any SQL Server 2005 or SQL Server 2000 components that are installed and identifies issues to fix either before or after you upgrade to SQL Server 2008.

**Online Installation Help**

Launch the online installation documentation.

**How to Get Started with SQL Server 2008 Failover Clustering**

Read instructions on how to get started with SQL Server 2008 failover clustering.

**Upgrade Documentation**

View the document about how to upgrade to SQL Server 2008 from SQL Server 2000 or SQL Server 2005.

Setup Support Rules

Setup Support Rules identify problems that might occur when you install SQL Server Setup support files. Failures must be corrected before Setup can continue.

Setup Support Rules

Operation completed. Passed: 12. Failed: 0. Warning: 0. Skipped: 1.



Hide details <<

Re-run

[View detailed report](#)

Rule	Status
<input checked="" type="checkbox"/> Minimum operating system version	Passed
<input checked="" type="checkbox"/> Setup administrator	Passed
<input checked="" type="checkbox"/> Restart computer	Passed
<input checked="" type="checkbox"/> Windows Management Instrumentation (WMI) service	Passed
<input checked="" type="checkbox"/> Consistency validation for SQL Server registry keys	Passed
<input checked="" type="checkbox"/> Unsupported SQL Server products	Passed
<input checked="" type="checkbox"/> Performance counter registry hive consistency	Passed
<input checked="" type="checkbox"/> Previous releases of SQL Server 2008 Business Intelligence Develop...	Passed
<input checked="" type="checkbox"/> Previous CTP installation	Passed
<input checked="" type="checkbox"/> Computer domain controller	Passed
<input checked="" type="checkbox"/> Microsoft .NET Application Security	Not applicable
<input checked="" type="checkbox"/> Edition WOW64 platform	Passed
<input checked="" type="checkbox"/> Windows PowerShell	Passed

OK

Cancel

Help

Planning

Installation

Maintenance

Tools

Resources

Advanced

Options



[New SQL Server stand-alone installation or add features to an existing installation](#)

Launch a wizard to install SQL Server 2008 in a non-clustered environment or to add features to an existing SQL Server 2008 instance.



[New SQL Server failover cluster installation](#)

Launch a wizard to install a single-node SQL Server 2008 failover cluster.



[Add node to a SQL Server failover cluster](#)

Launch a wizard to add a node to an existing SQL Server 2008 failover cluster.



[Upgrade from SQL Server 2000 or SQL Server 2005](#)

Launch a wizard to upgrade SQL Server 2000 or SQL Server 2005 to SQL Server 2008. Before you upgrade, you should run the Upgrade Advisor to detect potential problems.



[Search for product updates](#)

Search Microsoft Update for SQL Server 2008 product updates.

Setup Support Rules

Setup Support Rules identify problems that might occur when you install SQL Server Setup support files. Failures must be corrected before Setup can continue.

Setup Support Rules

Operation completed. Passed: 5. Failed 0. Warning 0. Skipped 0.



Hide details <<

Re-run

[View detailed report](#)

Rule	Status
<input checked="" type="checkbox"/> Minimum operating system version	Passed
<input checked="" type="checkbox"/> Setup administrator	Passed
<input checked="" type="checkbox"/> Restart computer	Passed
<input checked="" type="checkbox"/> Windows Management Instrumentation (WMI) service	Passed
<input checked="" type="checkbox"/> Consistency validation for SQL Server registry keys	Passed

OK

Cancel

Help

Product Key

Specify the edition of SQL Server 2008 to install.

Product Key
License Terms
Setup Support Files

Specify a free edition of SQL Server or provide a SQL Server product key to validate this instance of SQL Server 2008. Enter the 25-character key from the Microsoft certificate of authenticity or product packaging. If you specify Enterprise Evaluation, the instance will be activated with a 180-day expiration. To upgrade from one edition to another edition, run the Edition Upgrade Wizard.

Specify a free edition:

Enterprise Evaluation

Enter the product key:

Product code for Enterprise Evaluation is valid.

< Back

Next >

Cancel

License Terms

To install SQL Server 2008, you must accept the Microsoft Software License Terms.

Product Key

License Terms

Setup Support Files

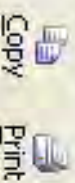
MICROSOFT PRE-RELEASE SOFTWARE LICENSE TERMS MICROSOFT SQL SERVER 2008 ENTERPRISE EDITION - Release Candidate (RC0)

These license terms are an agreement between Microsoft Corporation (or based on where you live, one of its affiliates) and you. Please read them. They apply to the pre-release software named above, which includes the media on which you received it, if any. The terms also apply to any Microsoft

- updates,
- supplements,
- Internet-based services, and
- support services

for this software, unless other terms accompany those items. If so, those terms apply.

BY CLICKING THE CONTINUE BUTTON YOU AGREE TO THESE TERMS. IF YOU DO NOT AGREE TO THEM



I accept the license terms.

< Back

Next >

Cancel

Setup Support Files

Click Install to install Setup Support Files. To install or update SQL Server 2008, these files are required.

Product Key

License Terms

Setup Support Files

The following components are required for SQL Server Setup:

Feature Name	Status
Setup Support Files	

Empty text area for additional information or instructions.

< Back

Install

Cancel

Setup Support Rules

Setup Support Rules identify problems that might occur when you install SQL Server Setup support files. Failures must be corrected before Setup can continue.

Setup Support Rules

Feature Selection

Disk Space Requirements

Error and Usage Reporting

Installation Rules

Ready to Install

Installation Progress

Complete

Operation completed. Passed: 9, Failed 0, Warning 1, Skipped 1.



Hide details <<

Re-run

[View detailed report](#)

Rule	Status
Fusion Active Template Library (ATL)	Passed
Unsupported SQL Server products	Passed
Performance counter registry hive consistency	Passed
Previous releases of SQL Server 2008 Business Intelligence Develop...	Passed
Previous CTP installation	Passed
Consistency validation for SQL Server registry keys	Passed
Computer domain controller	Passed
Microsoft .NET Application Security	Not applicable
Edition WOW64 platform	Passed
Windows PowerShell	Passed
Windows Firewall	Warning

< Back

Next >

Cancel

Help

Feature Selection

Select the Enterprise features to install. For clustered installations, only Database Engine Services and Analysis Services can be clustered.

Setup Support Rules

Feature Selection

- Instance Configuration
- Disk Space Requirements
- Server Configuration
- Database Engine Configuration
- Analysis Services Configuration
- Reporting Services Configuration
- Error and Usage Reporting
- Installation Rules
- Ready to Install
- Installation Progress
- Complete

Features:

Instance Features

- Database Engine Services
- SQL Server Replication
- Full-Text Search
- Analysis Services
- Reporting Services

Shared Features

- Business Intelligence Development Studio
 - Client Tools Connectivity
 - Integration Services
 - Client Tools Backwards Compatibility
 - Client Tools SDK
 - SQL Server Books Online
 - Management Tools - Basic
 - Management Tools - Complete
 - SQL Client Connectivity SDK
 - Microsoft Sync Framework
- Redistributable Features

Description:

Server features are instance-aware and have their own registry hives. They support multiple instances on a computer.

Select All

Unselect All

Shared feature directory:

C:\Program Files\Microsoft SQL Server\



< Back

Next >

Cancel

Help

Instance Configuration

Specify the name and instance ID for the SQL Server instance.

Setup Support Rules

Feature Selection

Instance Configuration

Disk Space Requirements

Server Configuration

Database Engine Configuration

Analysis Services Configuration

Reporting Services Configuration

Error and Usage Reporting

Installation Rules

Ready to Install

Installation Progress

Complete

Default instance

Named instance:

MSSQLSERVER

Instance ID:

MSSQLSERVER

Instance root directory:

C:\Program Files\Microsoft SQL Server\



SQL Server directory:

C:\Program Files\Microsoft SQL Server\MSSQL10.MSSQLSERVER

Analysis Services directory:

C:\Program Files\Microsoft SQL Server\MSAS10.MSSQLSERVER

Reporting Services directory:

C:\Program Files\Microsoft SQL Server\MSRS10.MSSQLSERVER

Installed instances:

Instance	Features	Edition	Version	Instance ID

< Back

Next >

Cancel

Help

Disk Space Requirements

Review the disk space summary for the SQL Server features you selected.

Setup Support Rules

Feature Selection

Instance Configuration

Disk Space Requirements

Server Configuration

Database Engine Configuration

Analysis Services Configuration

Reporting Services Configuration

Error and Usage Reporting

Installation Rules

Ready to Install

Installation Progress

Complete

Disk Usage Summary:

Drive C: 2684 MB required, 60195 MB available

- System directory (C:\WINDOWS\system32): 1256 MB required
- Shared feature directory (C:\Program Files\Microsoft SQL Server\): 784 MB required
- Instance directory (C:\Program Files\Microsoft SQL Server\): 644 MB required

< Back

Next >

Cancel

Help

Server Configuration

Specify the configuration.

- Setup Support Rules
- Feature Selection
- Instance Configuration
- Disk Space Requirements
- Server Configuration**
- Database Engine Configuration
- Analysis Services Configuration
- Reporting Services Configuration
- Error and Usage Reporting
- Installation Rules
- Ready to Install
- Installation Progress
- Complete

Service Accounts Collation

Microsoft recommends that you use a separate account for each SQL Server service.

Service	Account Name	Password	Startup Type
SQL Server Agent	NT AUTHORITY\SYSTEM		Automatic
SQL Server Database Engine	NT AUTHORITY\SYSTEM		Automatic
SQL Server Analysis Services	NT AUTHORITY\SYSTEM		Automatic
Sql Server Reporting Services	NT AUTHORITY\SYSTEM		Automatic
SQL Server Integration Servic...	NT AUTHORITY\NETWORK SE...		Automatic

Use the same account for all SQL Server services

These services will be configured automatically where possible to use a low privilege account. On some older Windows versions the user will need to specify a low privilege account. For more information, click Help.

Service	Account Name	Password	Startup Type
SQL Full-text Filter Daemon Launcher	NT AUTHORITY\LOCAL S...		Manual
SQL Server Browser	NT AUTHORITY\LOCAL S...		Disabled

< Back Next > Cancel Help

Database Engine Configuration

Specify Database Engine authentication security mode, administrators and data directories.

- Setup Support Rules
- Feature Selection
- Instance Configuration
- Disk Space Requirements
- Server Configuration
- Database Engine Configuration**
- Analysis Services Configuration
- Reporting Services Configuration
- Error and Usage Reporting
- Installation Rules
- Ready to Install
- Installation Progress
- Complete

Account Provisioning | Data Directories | FILESTREAM

Specify the authentication mode and administrators for the Database Engine.

Authentication Mode _____

Windows authentication mode

Mixed Mode (SQL Server authentication and Windows authentication)

Built-in SQL Server system administrator account _____

Enter password: ●●●

Confirm password: ●●●

Specify SQL Server administrators _____

- PTMAL\Pinal Dave (Pinal Dave)**

SQL Server administrators have unrestricted access to the Database Engine.

Add Current User | Add... | Remove

< Back | Next > | Cancel | Help

Reporting Services Configuration

Specify the Reporting Services configuration mode.

Setup Support Rules
Feature Selection
Instance Configuration
Disk Space Requirements
Server Configuration
Database Engine Configuration
Analysis Services Configuration
Reporting Services Configuration
Error and Usage Reporting
Installation Rules
Ready to Install
Installation Progress
Complete

Install the native mode default configuration.

Setup will install the report server and configure it in Native mode to use the default values. The report server is usable as soon as Setup is finished.

Install the SharePoint integrated mode default configuration.

Setup will create the report server database in SharePoint integrated mode and configure the report server to use the default values. However, integrated operations will not be supported until a minimal installation of a SharePoint product or technology is deployed on the report server computer and the Reporting Services Add-in for SharePoint Technologies is installed and configured on the instance of the SharePoint product or technology you are using.

Install, but do not configure the report server.

Setup will install, but will not configure, the report server software. After installation is finished, you can use the Reporting Services Configuration tool to set options that are required to run the report server.

< Back

Next >

Cancel

Help

Error and Usage Reporting

Help Microsoft improve SQL Server features and services.

- Setup Support Rules
- Feature Selection
- Instance Configuration
- Disk Space Requirements
- Server Configuration
- Database Engine Configuration
- Analysis Services Configuration
- Reporting Services Configuration
- Error and Usage Reporting**
- Installation Rules
- Ready to Install
- Installation Progress
- Complete

Specify the information that you would like to automatically send to Microsoft to improve future releases of SQL Server. These settings are optional. Microsoft treats this information as confidential. Microsoft may provide updates through Microsoft Update to modify feature usage data. These updates might be downloaded and installed on your machine automatically, depending on your Automatic Update settings.

[View the Microsoft policy for SQL Server privacy and data collection.](#)

[Read more about Microsoft Update and Automatic Update.](#)

- Send Windows and SQL Server Error Reports to Microsoft or your corporate report server. This setting only applies to services that run without user interaction.
- Send feature usage data to Microsoft. Feature usage data includes information about your hardware configuration and how you use Microsoft software and services.

< Back

Next >

Cancel

Help

Installation Rules

Setup is running rules to determine if the installation process will be blocked. For more information, click Help.

Setup Support Rules

Feature Selection

Instance Configuration

Disk Space Requirements

Server Configuration

Database Engine Configuration

Analysis Services Configuration

Reporting Services Configuration

Error and Usage Reporting

Installation Rules

Ready to Install

Installation Progress

Complete

Operation completed. Passed: 8. Failed 0. Warning 0. Skipped 0.



Hide details <<

Re-run

[View detailed report](#)

Rule	Status
Same architecture installation	Passed
Cross language installation	Passed
Existing clustered or cluster-prepared instance	Passed
Reporting Services Catalog Database File Existence	Passed
Reporting Services Catalog Temporary Database File Existence	Passed
SQL Server 2005 Express tools	Passed
Operating system supported for edition	Passed
FAT32 File System	Passed

< Back

Next >

Cancel

Help

Ready to Install

Verify the SQL Server 2008 features to be installed.

- Setup Support Rules
- Feature Selection
- Instance Configuration
- Disk Space Requirements
- Server Configuration
- Database Engine Configuration
- Analysis Services Configuration
- Reporting Services Configuration
- Error and Usage Reporting
- Installation Rules
- Ready to Install**
- Installation Progress
- Complete

Ready to install SQL Server 2008:

Summary

- Edition: Enterprise
- Action: Install

General Configuration

Features

- Database Engine Services
- SQL Server Replication
- Full-Text Search
- Analysis Services
- Reporting Services
- Business Intelligence Development Studio
- Client Tools Connectivity
- Integration Services
- Client Tools Backwards Compatibility
- Client Tools SDK
- SQL Server Books Online
- Management Tools - Basic
- Management Tools - Complete
- SQL Client Connectivity SDK
- Microsoft Sync Framework

Instance configuration

- Instance Name: MSSQLSERVER
- Instance ID: MSSQLSERVER

Instance IDs

- SQL Database Engine: MSSQL10.MSSQLSERVER
- Analysis Services: MCHAS10.MSSQLSERVER

Configuration file path:

C:\Program Files\Microsoft SQL Server\100\Setup Bootstrap\log\20080621_200321\{ConfigurationFile.ini

- < Back
- Install
- Cancel
- Help

Installation Progress

- Setup Support Rules
- Feature Selection
- Instance Configuration
- Disk Space Requirements
- Server Configuration
- Database Engine Configuration
- Analysis Services Configuration
- Reporting Services Configuration
- Error and Usage Reporting
- Installation Rules
- Ready to Install
- Installation Progress**
- Complete

Running pre-Windows Installer configuration timing actions.



Configevent_SQL_PowerShell_Tools_ANS_sql_ssms_Cpu32_Install_ShutdownNonInstance_premsi

Next >

Cancel

Help

Installation Progress

- Setup Support Rules
- Feature Selection
- Instance Configuration
- Disk Space Requirements
- Server Configuration
- Database Engine Configuration
- Analysis Services Configuration
- Reporting Services Configuration
- Error and Usage Reporting
- Installation Rules
- Ready to Install
- Installation Progress**
- Complete

Performing Windows Installer actions.



Install_VS_Shell_Cpu32_Action : WriteRegistryValues, Writing system registry values

Next > Cancel Help

Installation Progress

- Setup Support Rules
- Feature Selection
- Instance Configuration
- Disk Space Requirements
- Server Configuration
- Database Engine Configuration
- Analysis Services Configuration
- Reporting Services Configuration
- Error and Usage Reporting
- Installation Rules
- Ready to Install
- Installation Progress**
- Complete

Setup process complete



Feature Name	Status
Database Engine Services	Success
SQL Server Replication	Success
Full-Text Search	Success
Analysis Services	Success
Reporting Services	Success
Integration Services	Success
Client Tools Connectivity	Success
Management Tools - Complete	Success
Client Tools SDK	Success
Client Tools Backwards Compatibility	Success
Business Intelligence Development Studio	Success
Management Tools - Basic	Success
SQL Client Connectivity SDK	Success
SQL Server Books Online	Success
Microsoft Sync Framework	Success

Next >

Cancel

Help

Complete

Your SQL Server 2008 installation completed successfully.

- Setup Support Rules
- Feature Selection
- Instance Configuration
- Disk Space Requirements
- Server Configuration
- Database Engine Configuration
- Analysis Services Configuration
- Reporting Services Configuration
- Error and Usage Reporting
- Installation Rules
- Ready to Install
- Installation Progress
- Complete**

Summary log file has been saved to the following location:

C:\Program Files\Microsoft SQL Server\100\Setup Bootstrap\log\20080621_200321
[Summary_pinal_20080621_200321.txt](#)

Information about the Setup operation or possible next steps:

Your SQL Server 2008 installation completed successfully.

Supplemental Information:

The following notes apply to this release of SQL Server only.

Microsoft Update

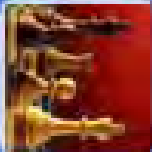
For information about how to use Microsoft Update to identify updates for SQL Server 2008, see the Microsoft Update Web site <<http://go.microsoft.com/fwlink/?linkid=108409>> at <http://go.microsoft.com/fwlink/?linkid=108409>.

Reporting Services

The Reporting Services installation options that you specified in Setup determine whether additional configuration is required before you can access the report server. If you installed the default configuration, the report server can be used immediately. If you installed the program files only, you must run the Reporting Services Configuration tool to deploy the report server.

Close

Help



Pinal Dave

Internet Explorer

E-mail Outlook Express

MSN

Windows Media Player

Windows Messenger

Tour Windows XP

Files and Settings Wizard

All Programs

Set Program Access and Defaults

Windows Catalog

Windows Update

Accessories

Games

Microsoft SQL Server 2008

Microsoft Visual Studio 2008

Startup

Windows PowerShell 1.0

Internet Explorer

MSN

Outlook Express

Remote Assistance

Windows Media Player

Windows Messenger

Windows Movie Maker

Analysis Services

Configuration Tools

Documentation and Tutorials

Integration Services

Performance Tools

Import and Export Data (32-bit)

SQL Server Business Intelligence Development Studio

SQL Server Management Studio

Log Off Turn Off Computer

Start

Microsoft



Microsoft®

SQL Server™ 2008

Management Studio

Microsoft SQL Server 2008

Connect to Server

Server type:

Database Engine

Server name:

SERVER

Authentication:

MIXED MODE

User name:

SA

Password:

ADMIN

Remember password

Connect

Cancel

Help

Options >>

Connect - PINAL (SQL Server 10.0.1442 - PINAL\Pinal Dave)

- Databases
- Security
- Server Objects
- Replication
- Management
- SQL Server Agent

SQLQuery1.sql ...nal Dave (57))*

```
PRINT 'Hello World!!!'
```

Messages
Hello World!!!

Query executed successfully.

PINAL (10.0.CTP) PINAL\Pinal Dave (57) master 00:00:00 0 rows

Properties

Current connection parameters

Aggregate Status

Connection Failures

Elapsed time 00:00:00.100

Finish time 6/21/2008 9:02:36 PM

Name PINAL

Rows returned 0

Start time 6/21/2008 9:02:36 PM

State Open

Connection

Connection name PINAL (PINAL\Pinal Dave)

Connection Details

Connection elapsed 00:00:00.100

Connection finish tm 6/21/2008 9:02:36 PM

Connection rows re 0

Connection start tm 6/21/2008 9:02:36 PM

Connection state Open

Display name PINAL

Login name PINAL\Pinal Dave

Server name PINAL

Server version 10.0.1442

SPID 57

Name

The name of the connection.