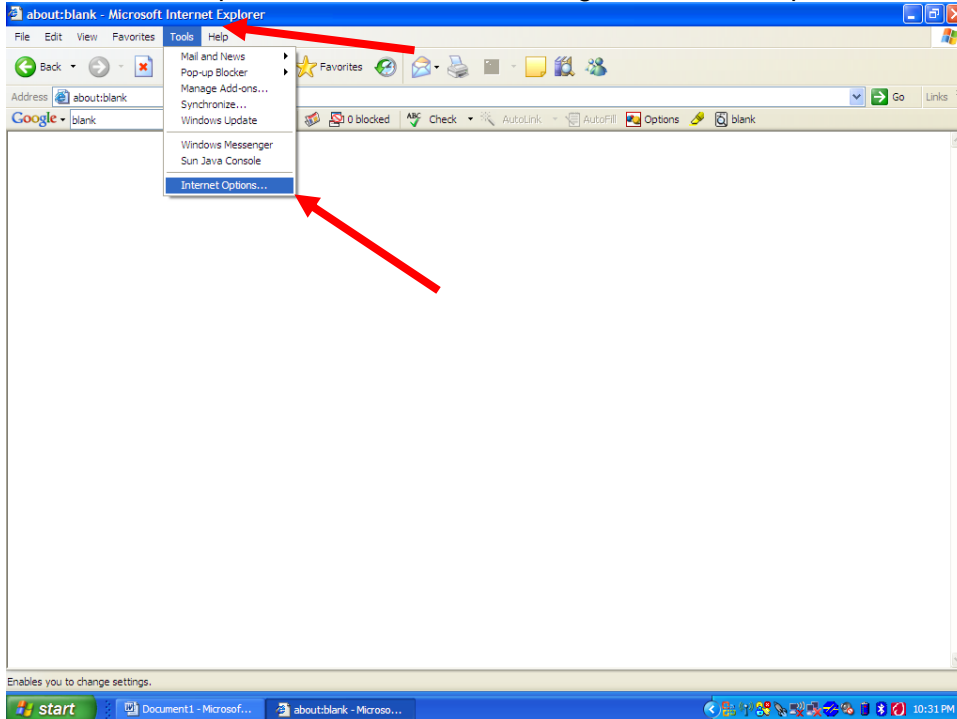


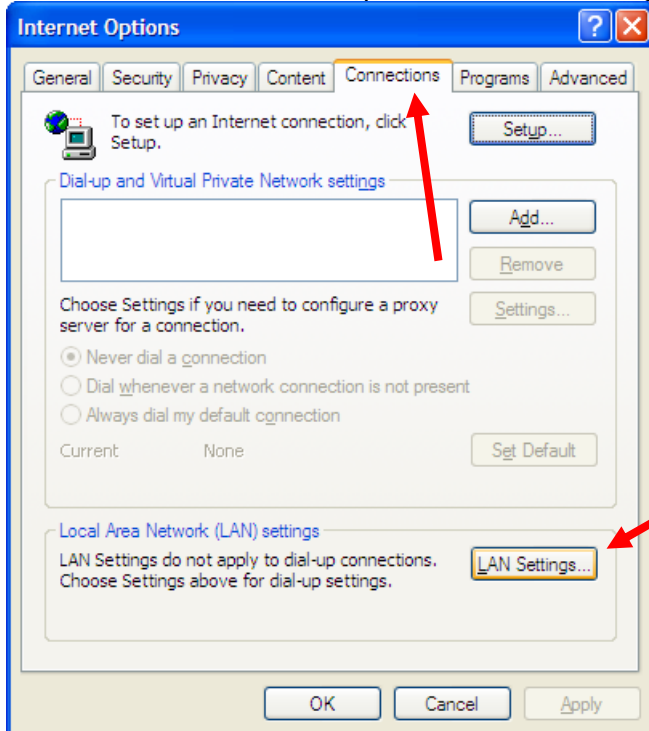
# Internet Explorer Settings

## Office

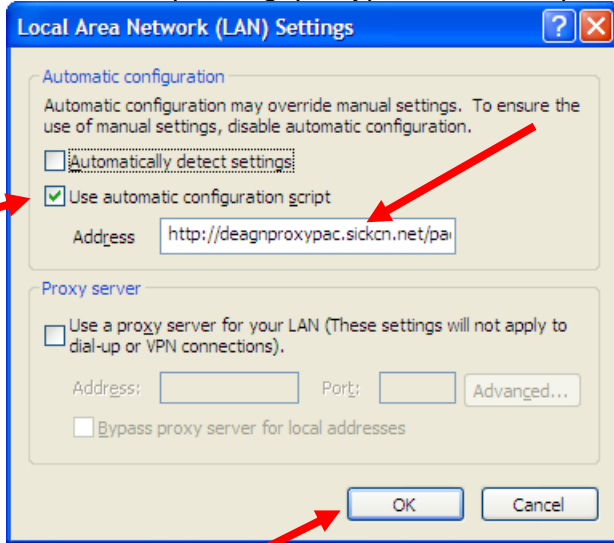
Start Internet Explorer, choose “Tools”, and go to “Internet Options ...”



Choose “Connections” and press the “LAN Settings ...” Button



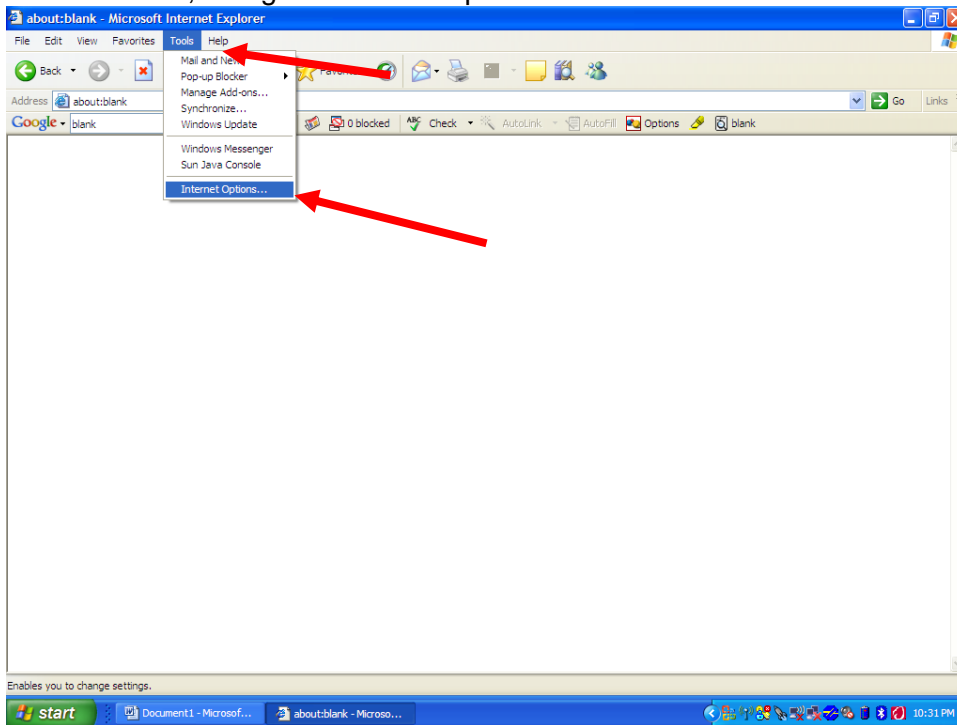
Activate "Use automatic configuration script" and type in the following string  
Address: "http://deagnproxypac.sickcn.net/pac/sickcn.pac"



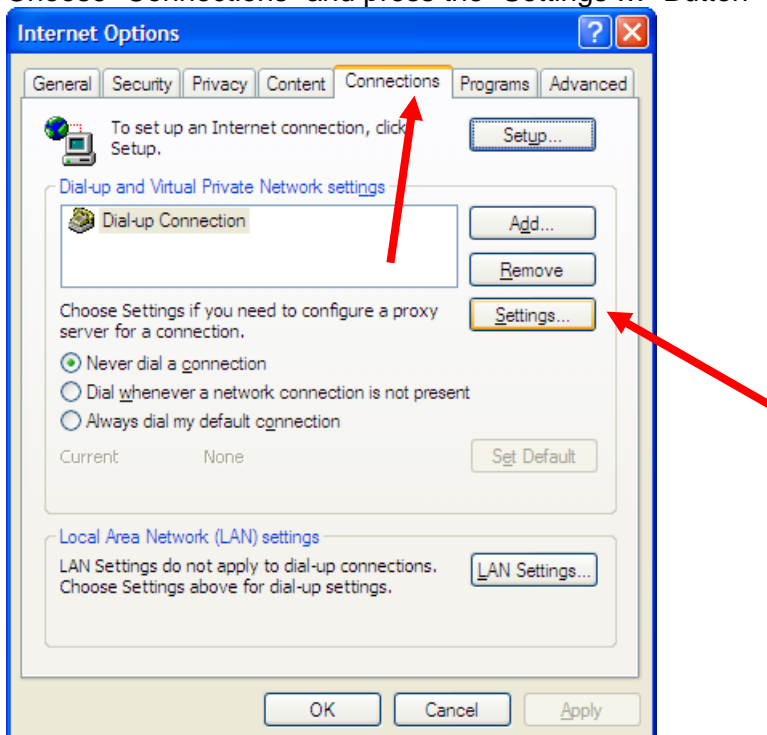
Press the "OK" Button (2 times)

# Dial in

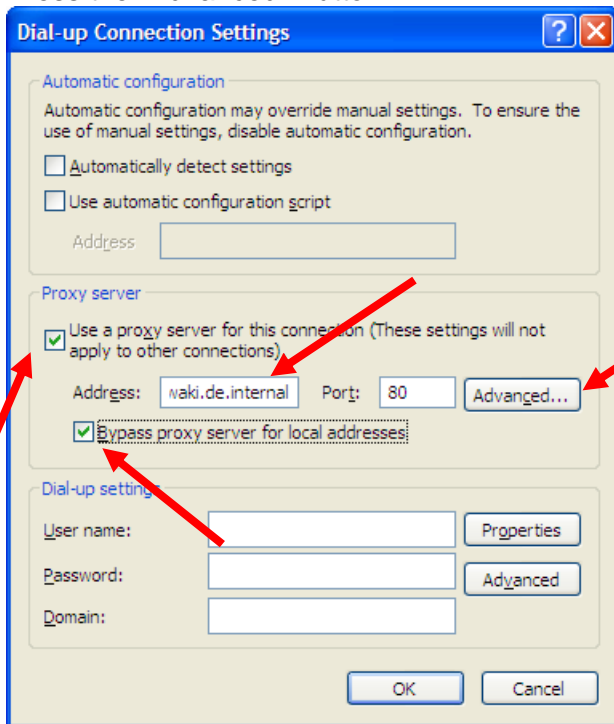
Choose Tools, and go to Internet Options ...



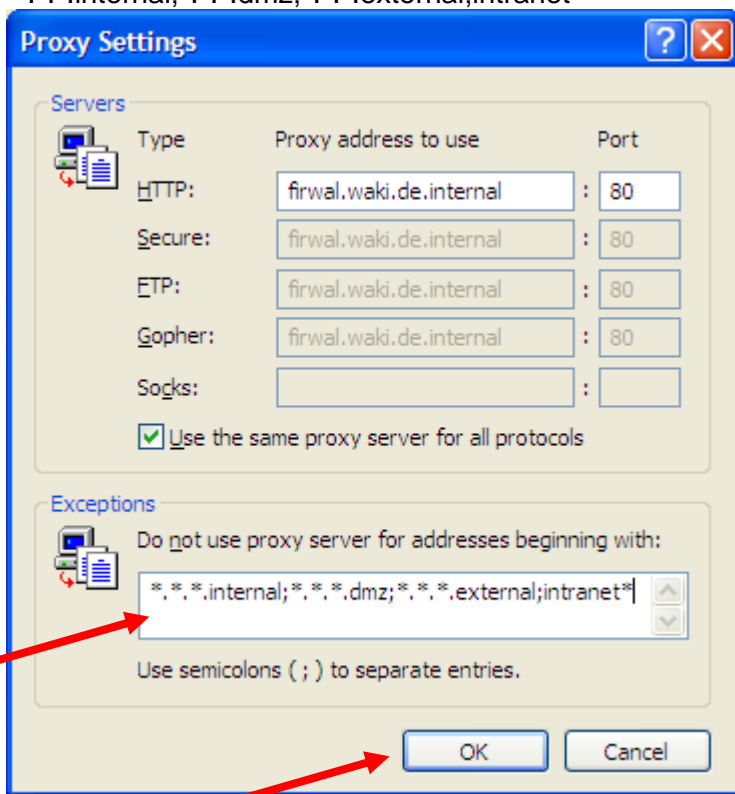
Choose "Connections" and press the "Settings ..." Button



Activate "Use a proxy..." and type in the following string  
 Address: "Firewall.waki.de.internal"  
 Port: "80"  
 Activate "Bypass ..."  
 Press the "Advanced" Button ...



... and type in (in the following window) the following string  
 "\*. \*. \*.internal;\*. \*. \*.dmz;\*. \*. \*.external;intranet\*"



Press the "OK" Button (3 times)

**The configuration of the Internet Explorer is now complete**